

## ADAS (Advanced Driver Assistance System)

ADAS Advanced Driver Assistance System, to help the driver in the driving process. Safety features are designed to avoid collisions and accidents by offering the technology that alert the driver to potential problems and warn them to take measures before dangers happened.

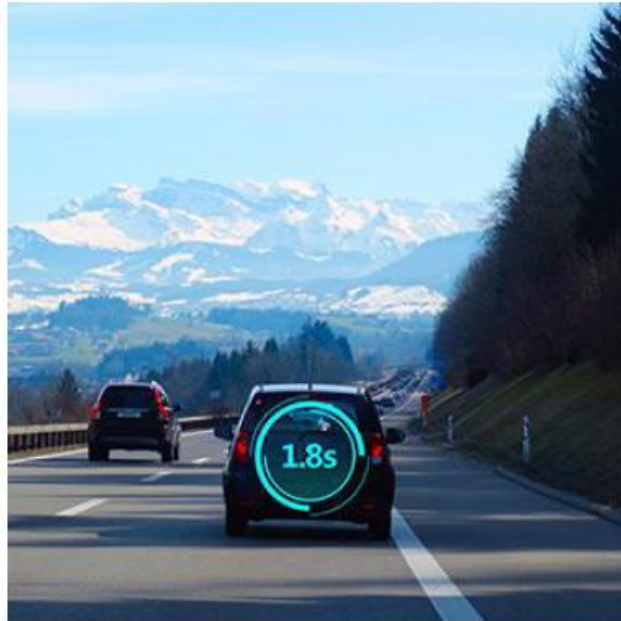
### Product description:

Advanced technology. Amazing early warnings. Buzzer and APP use. Elegant curve. 15mins simply DIY. One powerful ADAS product.



**Functions:*****The most advanced early warnings***

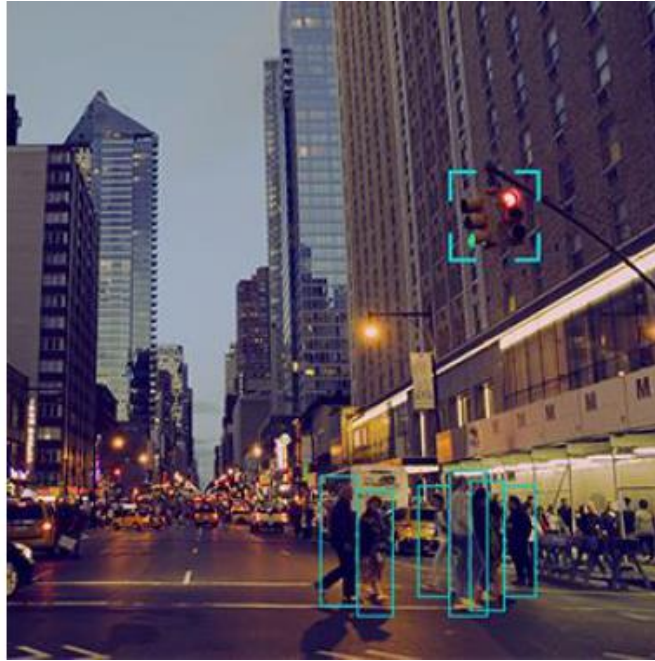
With MTK 8 Core chip, an electronic gizmo that gives the driver warns before certain types of accidents will happen.

**It has 8 great functions:****FCW - Forward Collision Warning**

Forward collision warning can alert you of an impending collision with a slower moving or stationary car in front of you.

**LDW - Lane Departure Warning**

To warn the driver when the vehicle begins to move out of its lane (unless a turn signal is on in that direction) on freeways and arterial roads.



**PD - Pedestrian Detection**

To warn the driver when forward pedestrian are too close to your vehicle, to avoid a collision.



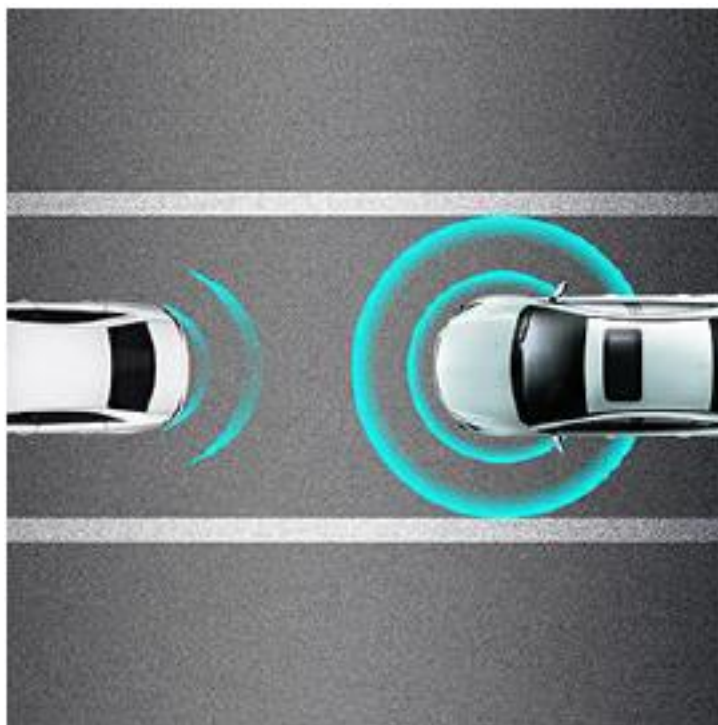
**HMW - Headway Monitoring Warning**

To warn the driver with visual and audio alerts if the following distance between your vehicle and the one ahead of you is too close and unsafe, to avoid vehicle ahead suddenly braking.



#### **FVSA - Front Vehicle Start Alarm**

To notify the driver once front vehicle starts to move forward from 0 speed (complete stopped status) or driver's vehicle is not moving within 2 seconds.



#### **VB - Virtual Bumper**

To warn the driver with visual and audio alerts when the following distance between your vehicle and vehicle ahead is too close in low-speed condition, to avoid crashes.



### Car DVR - Car Digital Video Recorder

To record videos in your vehicle, for checking back what happens before and after accidents.



### VCM - Vehicle Condition Monitoring

The driver can check your vehicle conditions at any time by ADAS App, such as current speed, oil consumption, etc., to cherish your vehicle in a more convenient way.

**Installation:**

***Three cables, 15 Minutes DIY Ergonomically, easy to assemble***

This system has never been so easy to install in a vehicle. Three cables to connect, only 15 minutes to DIY, you can just put it on your windscreen.



Buzzer

***A touch of genius***

We abandoned the old shape and appearance of buzzer, and redesigned it totally. Straight-sitting design with screen, visual icons and audio alerts both will remind drivers to take measures. If phone calls in, don't worry, only to press one-key button, the warning will be quiet at that moment; And it can be connected directly to power in vehicle, enabling more peak power. Double guarantee and dual safety provide you newly safety experience.



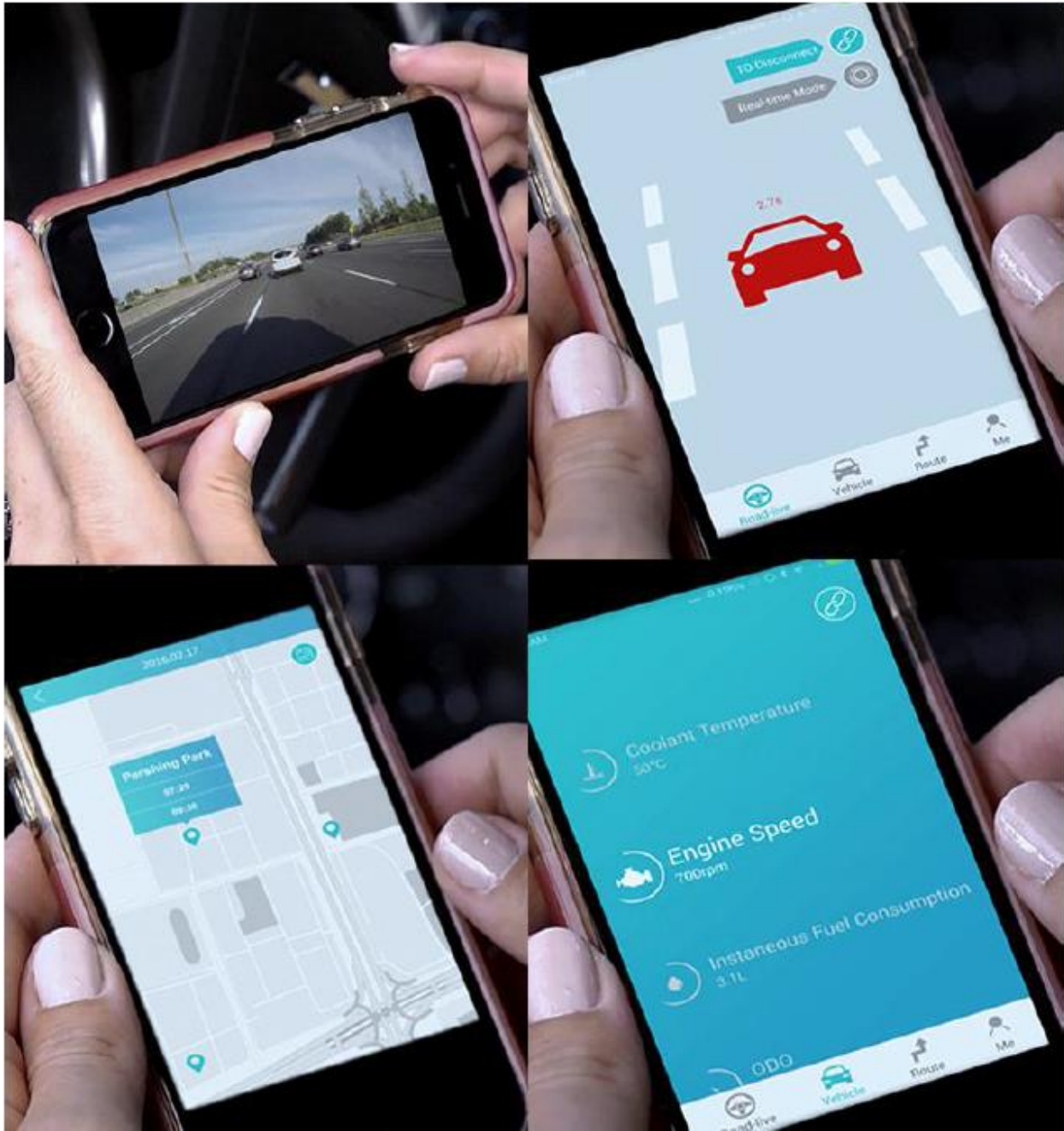
Adas App

### ***Safety, Is In Your Hands***

With ADAS App, you can fully play an important role in ADAS functions. Through flexible customized settings in app, drivers can adjust warning frequency and its sensitivity.

App can let you watch accident videos, real-time road condition and your vehicle conditions, to make your driving easy and secure through your own mobile phone.



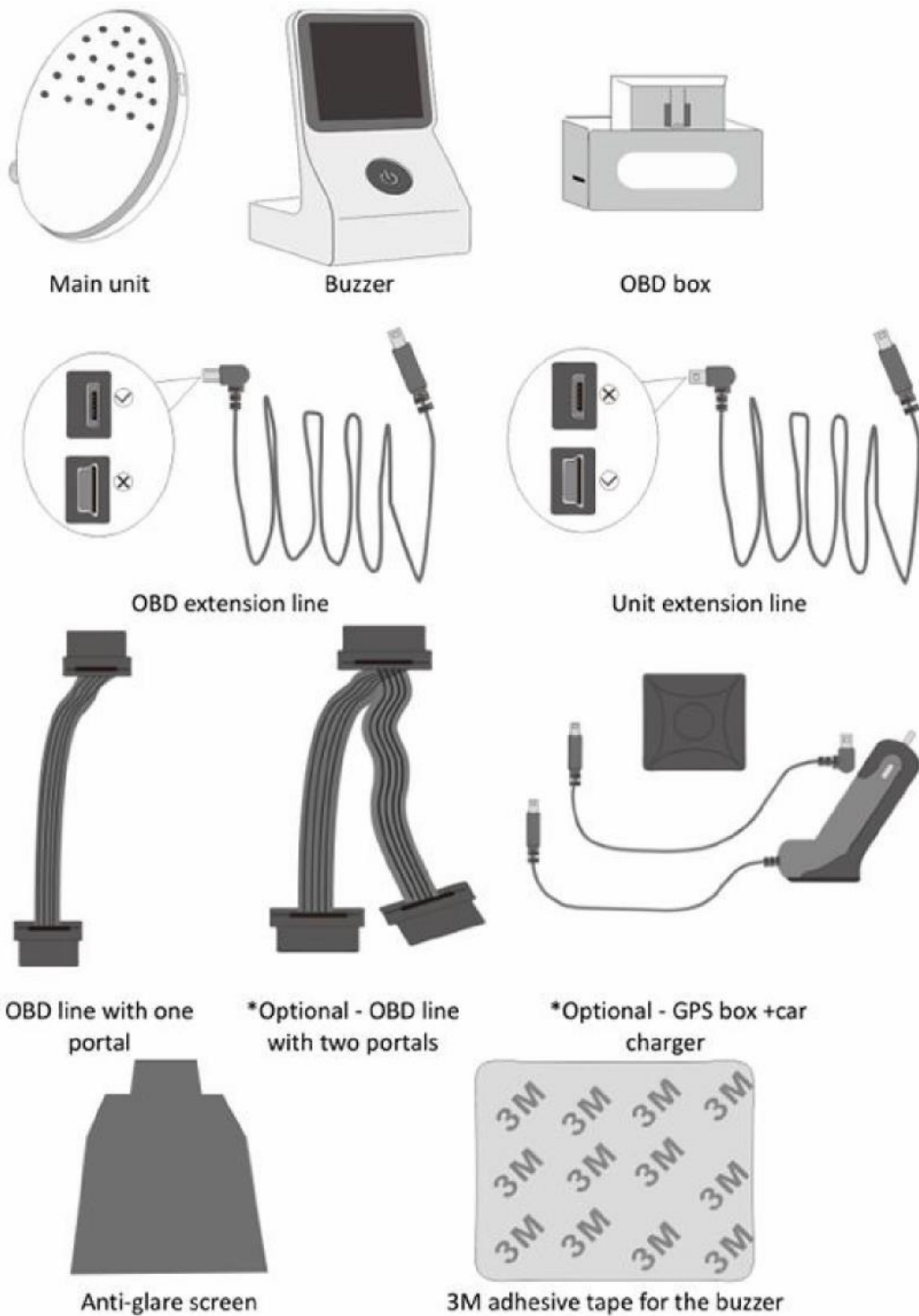


***A breakthrough design. Elegant, Simple, Cool***

Innovation isn't always obvious to the eye, but look a little closer and you'll find it's been fundamentally improved than most in market. Round elegant curve. Small and exquisite.



**Packing list:**



Main unit

Buzzer

OBD box

OBD extension line

Unit extension line

OBD line with one portal

\*Optional - OBD line with two portals

\*Optional - GPS box + car charger

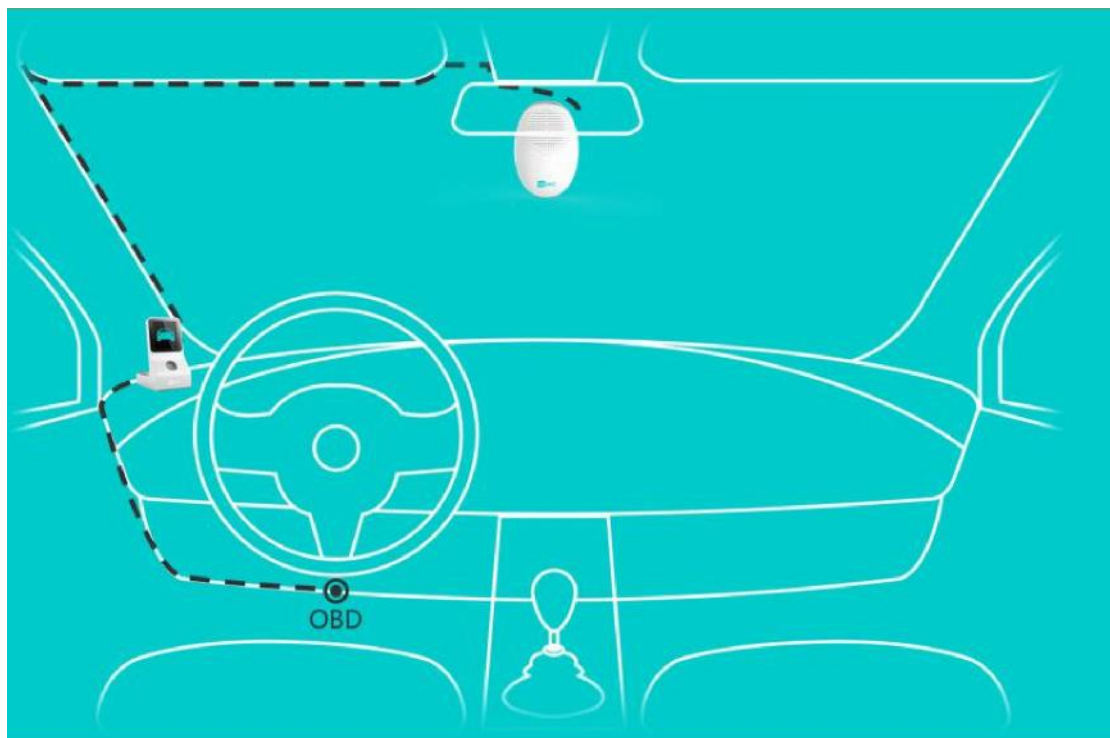
Anti-glare screen

3M adhesive tape for the buzzer

**Product specification:**

Product model	
<i>CPU</i>	MTK 8 Core Chip, 8GB
<i>ROM</i>	8GB eMMC
<i>RAM</i>	1GBLPDDR3
<i>Power Input</i>	9-36V
<i>Quiescent Current</i>	<150uA
<i>Working Current</i>	<500mA(under 12VDC)
<i>Working Temperature</i>	-25 ~ 85°C
<i>Camera</i>	One camera, 720P
<i>Warning Device</i>	Buzzer, or smart phone
<i>Else</i>	<ol style="list-style-type: none"> <li>1. Communicates with our smart phone APP by Bluetooth and WIFI, to display the warning, and video, and the vehicle status on your smart phone.</li> <li>2. All important data can be saved in smart phone, especially videos during driving.</li> </ol>

**Installation wiring:**



**Practical effects:**

This is the practical effects that LS-8V installed and tested in a vehicle (Pictures shot are compressed, the original video will be much better).

